

Fund ID: IO1

IPO: May 5 – 14, 2021

**Not for Retail Investors
(For Accredited Investors Only)
High Risk or Complex Fund**

(Cheques are not accepted for subscription payment on May 14, 2021)

Data as of May 7, 2021

Fund Fact Sheet



KASIKORN ASSET MANAGEMENT CO., LTD.

Certified by Thailand's Private Sector Collective

Action Coalition Against Corruption: CAC

K Complex Return 1 Year A Fund Not for Retail Investors

KCR1YA-AI

Mixed Fund

FIF (Foreign Investment Fund)

Investors cannot redeem this fund before 1 year.

The Fund has high sector concentration in Banking sector. If there are any factors negatively affect the investment of this fund, investors may lose principal investment.



What are you going to invest in?



Who is this fund suitable for?



What are the key risks of the Fund?



Asset Allocation



Fees and Expenses



Fund Performance



Other Information

Investment in mutual fund is not money deposit.

Disclaimer: The original language of this document is Thai. In case of any discrepancies, the Thai version shall prevail and supersede the English-translated version in all aspects.



What are you going to invest?

■ Investment Policy

The Fund mainly invest approximately 99.30% of NAV in local and/or foreign investment grade fixed income and/or deposit with an aim to grow to 100% of initial investment at maturity. The fund will be fully hedged for foreign investment. However, the Fund may invest in non-investment grade fixed income only in case when such security is rated in investment grade while it is invested by the Fund.

The Fund will invest approximately 0.70% of NAV in derivatives (Option or Warrant) which payoff depends on SET50 Index level (underlying index level).

The Fund will invest in foreign fixed income and/or deposit not less than 80% of NAV.

The Fund may invest in Structured Noted and derivative for efficient portfolio management purpose.

■ Strategy for the Fund's Management

Buy-and-hold Fund

Investment Details

Part 1: The Fund mainly invest approximately 99.30% of NAV in local and/or foreign investment grade fixed income and/or deposit with an aim to grow to 100% of initial investment at maturity.

Tentative portfolio of fixed income and/or deposits

Securities	Issuer Credit Ratings	Investment Proportion
Deposit at Doha Bank, Qatar	Baa1 /Moody's	19.00%
Deposit at Qatar National Bank, Qatar	Aa3/Moody's	19.00%
Deposit at Al Khalij Commercial Bank, Qatar	A3/Moody's	19.00%
Deposit at Commercial Bank of Qatar, Qatar	A3/Moody's	19.00%
Deposit at PT Bank Rakyat Indonesia, Indonesia	Baa2/Moody's	19.00%
Deposit at Bank of China, People's Republic of China	A1 /Moody's	4.30%
Total		99.30%

* The Management Company may use discretion to change securities or investment proportion when it is under necessary and appropriate situation in order to protect investor's benefits. Such changes shall not significantly increase the risk level of invested securities. The Management Company may consider to invest in other securities instead and/or make additional investment from securities as indicated above which are under investment universe of the Management Company and estimated return may be subjected to change. In case of such changes, the investor might not receive expected return as indicated above.

** Credit rating agency shown above is only one of credit rating agencies which the Management Company uses for investment consideration.

Part 2: The Fund will invest approximately 0.70% of NAV in option or warrant which payoff depends on SET50 Index level (underlying index level). The notional amount of option or warrant will be approximately 100% of registered fund size.

Details of Option or Warrant

Underlying Index	SET50 Index
Currency	THB
Tenor	1 Year
Participation Rate: PR	35%
Rebate Rate	0.25%

Details of Option or Warrant

Payment Conditions	<p>In case of the following extraordinary events, the calculation agent will calculate market price of option or warrant base on that event and the fund reserves the right to adjust payoff conditions.</p> <ol style="list-style-type: none"> 1) Underlying index is cancelled. 2) Underlying index calculation methodology is changed. 3) Index provider cannot calculate or declare the official underlying index level. 4) There are any changes in law or regulation that affect the underlying index or option or warrant. 5) Option or Warrant issuer has a significantly increase in hedging cost of the transaction (new or increasing taxes, duties, expenses or fees). 6) Option or Warrant issuer is unable, after using commercially reasonable efforts, to <ol style="list-style-type: none"> (a) Acquire, establish, re-establish, substitute, maintain, unwind or dispose of any transactions or assets it deems necessary to hedge the price risk according to conditions and obligations of option or warrant. (b) Realize, recover or remit the proceeds of any transactions or assets.
Option or Warrant Issuer	Commercial Bank or Investment grade financial institutions.

Past Performance of SET50 Index as of March 2021

	Cumulative Return				Annualised Return			
	YTD	1 month	3 months	6 months	1 year	3 years	5 years	10 years
SET50 Index	6.68%	4.44%	6.68%	24.35%	28.32%	-6.07%	1.40%	2.81%

Remarks: (1) Data from Monthly Report of SET50 Index as of March 2021. (Prepared by The Stock Exchange of Thailand)
 (2) Past performance is not an indicator of future trends.

Payoff Conditions of Option or Warrant

Issue date is the starting date to invest in option or warrant.

Valuation date is expiration date of option or warrant contracts and is the last day to consider closing index level. If such date is not a Scheduled Trading Day, it will be changed to the following scheduled trading day. (Within 30 days before maturity)

- Underlying index is SET50 Index in THB.
- Change of underlying index = (underlying index level on any trading or valuation date / underlying index level on issue date) – 1
- Participation Rate: 35%
- Rebate Rate: 0.25% when the underlying index changes more than 12% from issue date.
- The notional amount of option or warrant is approximately 100% of fund size raised during IPO period.

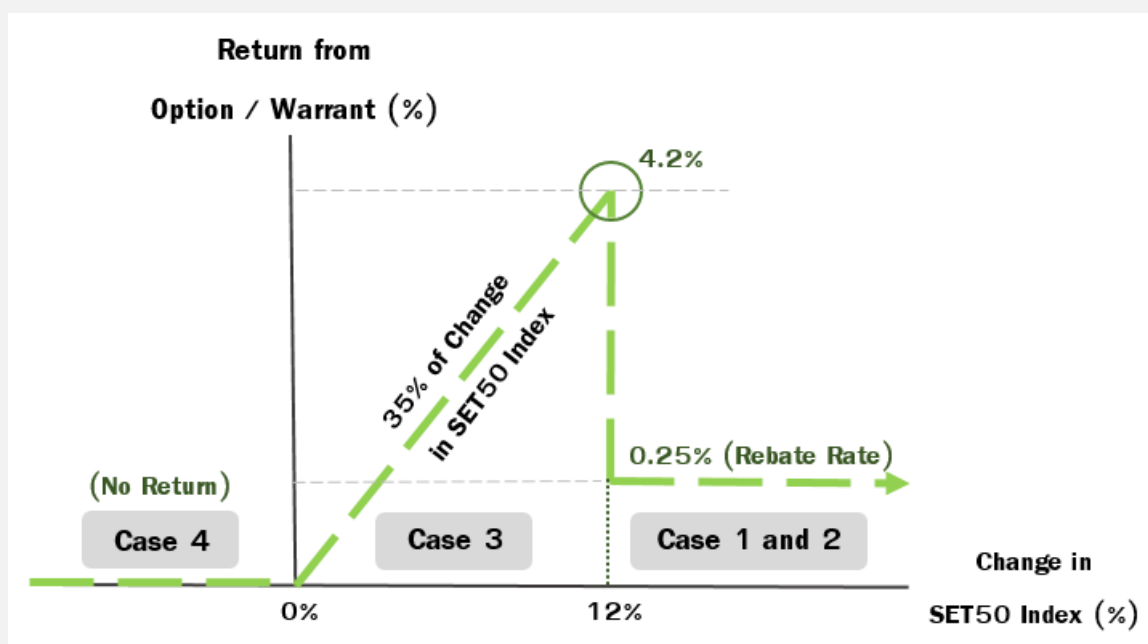
Principal and Return Payout Conditions at maturity

	Conditions	Principal and Return Payout at maturity
Case 1	Change of underlying index on any business day (before valuation date) is more than 12% of underlying index level on issue date	Principal 100% + rebate rate 0.25%
Case 2	Change of underlying index on valuation date is more than 12% of underlying index level on issue date	Principal 100% + rebate rate 0.25%
Case 3	Change of underlying index on valuation date is more than 0% but not more than 12% of underlying index level on issue date	Principal 100% + Option or Warrant payoff (Option or Warrant payoff = PR x Change of underlying index x Principal)
Case 4	Change of underlying index on valuation date is less than or equal to 0% of underlying index level on issue date	Principal 100% (No return from Option or Warrant)

* Change of underlying index is calculated from the official closing level of the Index for such day.

** Option or Warrant Contract Period is issue date to valuation date.

Return Payout Conditions at maturity diagram



Example of Return Calculation

Example of principal and return payout

Hypothesis: – Investment of 1,000,000 Baht is divided into 2 parts

- Part 1: Approximately 993,000 Baht will be invested in local and/or foreign investment grade fixed income and/or deposit with an aim to grow to 1,000,000 Baht at maturity.
- Part 2: Approximately 7,000 Baht will be invested in Option or Warrant which payoff depends on SET50 Index level (underlying index level).

Securities	Investment Proportion	Return Payout at maturity (approximately 1 year)	Principal and return payout as expected (% p.a.)
Part 1 : Local and/or foreign fixed income and/or deposit	99.30%	approximately 1.06%	100.35%
Less Estimated Fund Expenses*			0.35%
Principal and return payout in part 1 after deducting the estimated fund expenses			100.00%
Part 2 : Option or Warrant	0.70%	Example of payoff calculation as the table below	

* Estimated Fund Expenses (including management fee) may be subjected to change that it will not exceed the maximum rate stated in the prospectus.

** The Fund may not receive principal and return as expected if the issuers or banks have payment default.

Example of Return Calculation

- Participation Rate (PR): 35%
- Rebate Rate: 0.25%
- SET50 Index levels are as follows;

	SET50 Index level on the issue date	Highest SET50 Index level during contract period	SET50 Index level on the valuation date
Case 1	1,000	$> 1,120$ (Change more than 12% from issue date)	Not consider
Case 2	1,000	$\leq 1,120$ (Change not more than 12% from issue date)	1,200 (Change 20% from issue date)
Case 3	1,000	$\leq 1,120$ (Change not more than 12% from issue date)	1,100 (Change 10% from issue date)
Case 4	1,000	$\leq 1,120$ (Change not more than 12% from issue date)	900 (Change -10% from issue date)

Examples of Principal and Return Payout

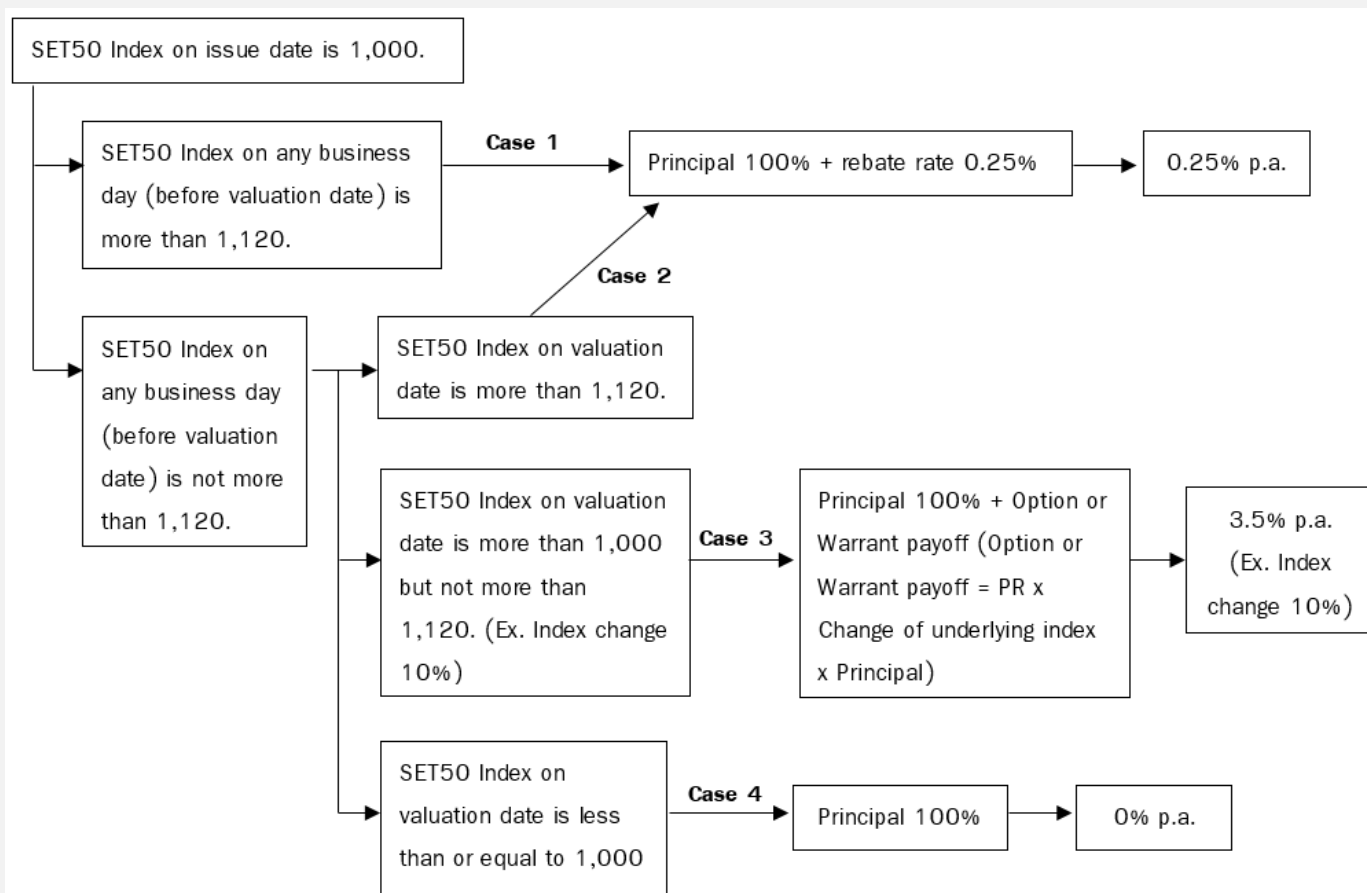
	Conditions	Principal (1)	Return payout from option or warrant (2)	Principal and Return Payout at maturity * (1)+(2)
Case 1	Change of underlying index on any business day is more than 12% of underlying index level on issue date	1,000,000 Baht	$0.25\% \times 1,000,000$ = 2,500 Baht	1,002,500 Baht (or 0.25% p.a.)
Case 2	Change of underlying index on valuation date is more than 12% of underlying index level on issue date	1,000,000 Baht	$0.25\% \times 1,000,000$ = 2,500 Baht	1,002,500 Baht (or 0.25% p.a.)
Case 3	Change of underlying index on valuation date is more than 0% but not more than 12% of underlying index level on issue date (Ex. Index changes 10%)	1,000,000 Baht	$35\% \times$ $([1,100/1,000] - 1)$ $\times 1,000,000 =$ 35,000 Baht	1,035,000 Baht (or 3.5% p.a.) (Ex. Index changes 10%)
Case 4	Change of underlying index on valuation date is less than or equal to 0% of underlying index level on issue date	1,000,000 Baht	No return from option or warrant	1,000,000 Baht (or 0% p.a.)

Remarks:

* Return after expenses.

** The amount of principal and return is for example only. It does not guarantee that the unitholders will receive the money as shown.

Examples of Principal and Return payout diagram



* Under the assumption that local and/or foreign fixed income and/or deposit do not default.

Important information of SET50 Index

SET50 Index is a stock price index prepared by The Stock Exchange of Thailand (SET). The index is calculated from the stock prices of the top 50 listed companies on SET in terms of large market capitalization, high liquidity and compliance with requirements regarding the distribution of shares to minor shareholders.

SET50 Index is composite index and market capitalization-weighted price index. The component stocks in the SET50 Index are reviewed every six months in order to adjust for any changes that have occurred in the stock market.

SET50 Index prepared by the Stock Exchange of Thailand which is not relevant and act independently from the management company. Investors find more information at www.set.or.th



Who is this fund suitable for?

- Investors who expect return more than those of deposit and accept return less than those of equity.
- Investors who understand and can accept the risk of loss if the issuers of invested securities default.
- Investors who understand complex payoff condition of option or warrant that depends on SET50 Index.
- Investors who can hold an investment for 1 years.

Who is this fund **not suitable** for?

- Investors who aim to receive certain amount of return.
- Investors who want to redeem investment units before 1 –year period.



What to do if you do not understand investment policy and risks of this fund?

- **Read** the full prospectus thoroughly, or **seek advice** from the management company or selling agents.
- **Do not invest** without a thorough understanding of the feature and risks of fund.

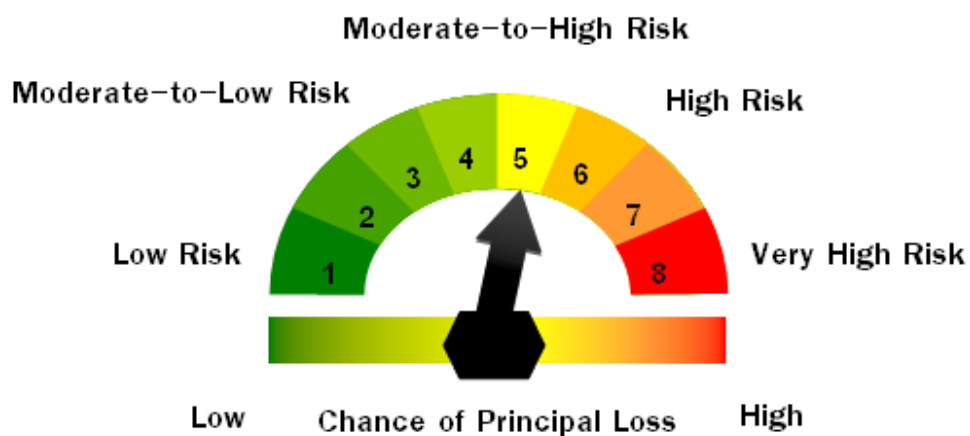


What do you have to specially beware of?

Warnings

- The fund is labeled as the high risk or complex fund because it invests in derivative with complex payoff conditions which may differ from plain fund. The investors should allocate their own portfolio's assets to balance the risk level according to the level that investors can accept. Discuss with your selling agents for more information is recommended. Please study the Fund's Prospectus and other sales materials.
- The fund invests in option or warrant which payoff depends on SET50 Index level and conditions. Hence return from investing in option or warrant will not equal to performance of SET50 Index. The investors should study and understand the feature and conditions before making an investment.
- The fund invests in derivatives for efficient portfolio management purpose. Hence the fund bears higher risk than other funds that directly invest in underlying assets.
- The Fund may not receive principal and return payout as expected if the issuers or banks have payment default which may affect the return that investors will receive.

Fund's Risk Level



Risk Factors

- **Market Risk**

Standard Deviation

Low	< 5%	5-10%	10-15%	15-25%	> 25%	High
------------	----------------	-------	--------	--------	-------	-------------

- **High Issuer Concentration Risk**

Total issuer concentration that the fund invests more than 10% of NAV.

Low	≤ 10%	10% - 20%	20% - 50%	50% - 80%	> 80%	High
------------	--------------	-----------	-----------	-----------	-------	-------------

- **High Sector Concentration Risk**

Total sector concentration that the fund invests more than 20% of NAV.

Low	≤ 20%	20% - 50%	50% - 80%	> 80%	High
------------	-------	-----------	-----------	-----------------	-------------

Remark: The Fund has high concentration in Banking sector.

- **High Country Concentration Risk**

Total country concentration that the fund invests more than 20% of NAV.

Low	≤ 20%	20% - 50%	50% - 80%	> 80%	High
------------	-------	-----------	------------------	-------	-------------

Remark: The Fund has high concentration in Qatar.

- **Exchange Rate Risk**

Foreign exchange risk hedging

Low	Fully Hedging	Partly Hedging	Hedging as discretion	No Hedging	High
------------	----------------------	----------------	-----------------------	------------	-------------

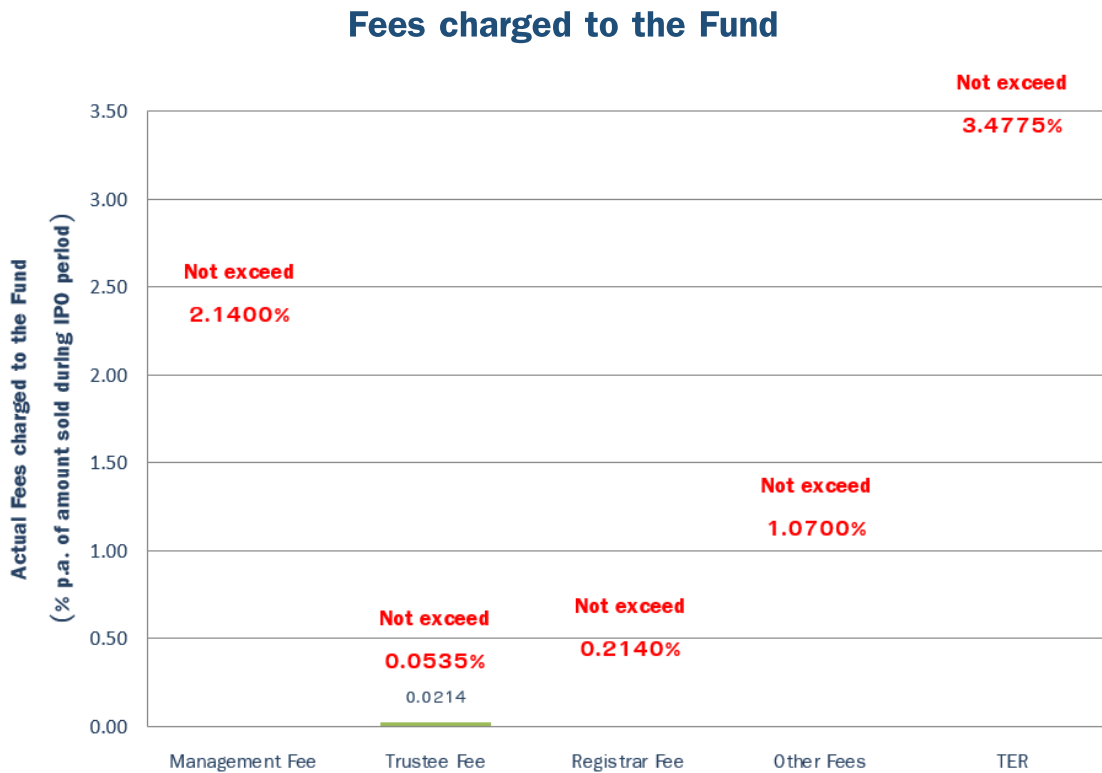


Fees

* Fees have an effect to the amount of return which investors will receive.

Hence, investors should consider fund fees before making an investment decision. *

Fees charged to the Fund (% p.a. of amount sold during IPO period)



Remark : The Management Fee will be able to notify on the trading day.

Fees charged to unitholders (% of trading value)

Fees	Not Exceeding	Actual
Front-End Fee	None	None
Exit Fee	None	None
Switching Fee	equals to redemption fee of switch-out fund or subscription fee of switch-in fund, whichever is higher.	

Remark : Fees are included VAT, specific business tax, and other taxes.



Fund Performance

*** Past performance is not a guarantee of future results ***

Benchmark: None because the rate of return of fund is in accordance with the conditions of derivatives (Option or Warrant) which are created for this particular fund. The return will depend on underlying index level on any business day or valuation date.

Fund type for performance comparison at selling point is –



Other Information

Dividend Payment Policy	None
Trustee	Bangkok Bank PCL
Inception Date	May 17, 2021 (subject to change)
Duration	Approximately 1 year but not lower than 11 months and not longer than 1 year and 1 month
Subscription and Redemption Details	<p><u>Fund size</u> : 2,000 MB with 100 MB green shoes</p> <p><u>Subscription date</u> : May 5 – 14, 2021 Every business day within 3.30 p.m.</p> <p>*** Cheques are not accepted for subscription payment on May 14, 2021 ***</p> <p>Minimum subscription value : 500,000 Baht</p> <p>Switching policy : Unitholders can subscribe this Fund by switching from K-CASH, K-MONEY, K-TREASURY, K-SF and K-SFPLUS during the initial offering period.</p> <p><u>Remark:</u> The Fund reserves the right not to offer the investment units of the fund to or for the benefit of the United States of America, US citizens, residents of the United States of America, or persons normally residing in the United States of America as well as the assets of such persons and companies or partnerships established and operating in the United States of America.</p>

	<p>Redemption date: Redemption will be at maturity of the fund. The Management Company will announce automatic redemption date to notify unitholders within 15 business days.</p> <p>Redemption Monies Proceeding: The Management Company will use proceeds from automatic redemption of this fund to subscribe reinvested fund, which is specified in passbook. Numbers of unit trust of reinvested fund, which the unitholders will receive, are calculated by using subscription price of reinvested fund on auto-redemption day of this fund.</p> <p>investors can examine NAV at www.kasikornasset.com</p>
Fund Manager	Mr. Varoon Boonrumluektanom (Portfolio Manager) Effective date: Fund inception date
Selling Agents	Kasikornbank Public Company Limited Tel. 0-2888-8888
Contact for more information, receive fund prospectus, and make a complaint at	Kasikorn Asset Management Co., Ltd. 400/22 KASIKORNBANK Bldg. 6 th and 12 th Floor, Phahon Yothin Road Samsen Nai, Phaya Thai Bangkok 10400 Tel. 0-2673-3888 Fax No. 0-2673-3988 Website : www.kasikornasset.com Email : Ka.customer@Kasikornasset.com
Transactions causing conflicts of interest	Investors can examine transactions that may cause conflicts of interest at www.kasikornasset.com

- Investment in unit trusts is neither bank deposit nor under the protection of Deposit Protection Agency. Investors may have risk of not receiving return of investment funds in full.
- Approved and regulated by The office of the Securities and Exchange Commission.
- The consideration of draft prospectus of this Fund does not mean that the SEC has certified the correctness of the information in the prospectus or guaranteed the price or return of the unit trusts. As the person responsible for managing the Mutual Fund, The Management Company carefully reviewed the information in the Fund Fact Sheet as of May 7, 2021 and hereby certifies that the information is correct, not fault and does not mislead.

Definition of Risk Factors

- **Credit Risk** indicates the ability to repay debts and/or obligations of the issuer. For credit risk assessment, credit rating of bonds, which indicates debt servicing ability of the bond issuers based on their past performance and financial strength. Credit ratings of long-term bonds can be briefly defined as follows.

Grade	TRIS	Fitch	Moody's	S&P	Description
Investment grade	AAA	AAA (tha)	Aaa	AAA	The highest possible rating assigned, which means <u>the lowest default risk</u> .
	AA	AA (tha)	Aa	AA	The second-highest rating, which means <u>very low default risk</u> .
	A	A (tha)	A	A	<u>Low default risk</u> .
	BBB	BBB (tha)	Baa	BBB	<u>Medium default risk</u> .
Below Investment grade	Below BBB	Below BBB (tha)	Below Baa	Below BBB	<u>High default risk</u> .

- **Market Risk** involves in interest rates movement, which is subject to many external factors such as economic conditions, as well as domestic and international political factors. If the standard deviation (SD) of the fund is high, this means that the fund has high historical volatility in asset prices.
- **High Concentration Risk**
 - High Issuer Concentration Risk occurs when the fund invests in any issuer more than 10% of NAV. If there are any events affect the operation, financial status or stability of such issuer, the fund may have more performance volatility than the fund that diversifies its investment in various issuers.
 - High Sector Concentration Risk occurs when the fund invests in any issuer more than 20% of NAV. If there are any events affect such sector, the fund may have more performance volatility than the fund that diversifies its investment in many sectors.
 - High Country Concentration Risk occurs when the fund invests in any country more than 20% of NAV. If there are any events affect such country such as political, economic and social issues. The fund may have more performance volatility than the fund that diversifies its investment in many countries.
- **Exchange Rate Risk** involves change in foreign exchange rates, which affects value of fund units. For instance, if the fund invests in assets quoted in US Dollar currency and Baht subsequently strengthens, the fund may get lower returns in Baht currency. On the contrary, the fund will gain higher returns in Baht currency under the opposite situation. Therefore, foreign exchange hedging strategy is the important tool for currency risk management. There are several hedging strategies i.e.,
 - **Fully hedged or almost fully hedged:** Investors have no exchange rate risk.

Risk Disclosure of K Complex Return 1 Year A Fund Not for Retail Investors (KCR1YA-AI)

I acknowledge and fully understand the fund’s feature, investment policy, investment strategy, conditions and risk factors of K Complex Return 1 Year A Fund Not for Retail Investors (KCR1YA-AI) that;

1. K Complex Return 1 Year A Fund Not for Retail Investors (KCR1YA-AI) is labeled as the high risk or complex fund because it invests in derivative with complex payoff conditions which may differ from plain fund.
2. K Complex Return 1 Year A Fund Not for Retail Investors (KCR1YA-AI) has the following investment policy;
 - 2.1 The Fund mainly invest approximately 99.30% of NAV in local and/or foreign investment grade fixed income and/or deposit with an aim to grow to 100% of initial investment at maturity and The Fund has high sector concentration in Banking sector and high country concentration in Qatar.
 - 2.2 The Fund will invest approximately 0.70% of NAV in option or warrant which payoff depends on SET50 Index level (underlying index level). The notional amount of option or warrant will be approximately 100% of registered fund size.
3. Principal and Return Payout Conditions as the following table;

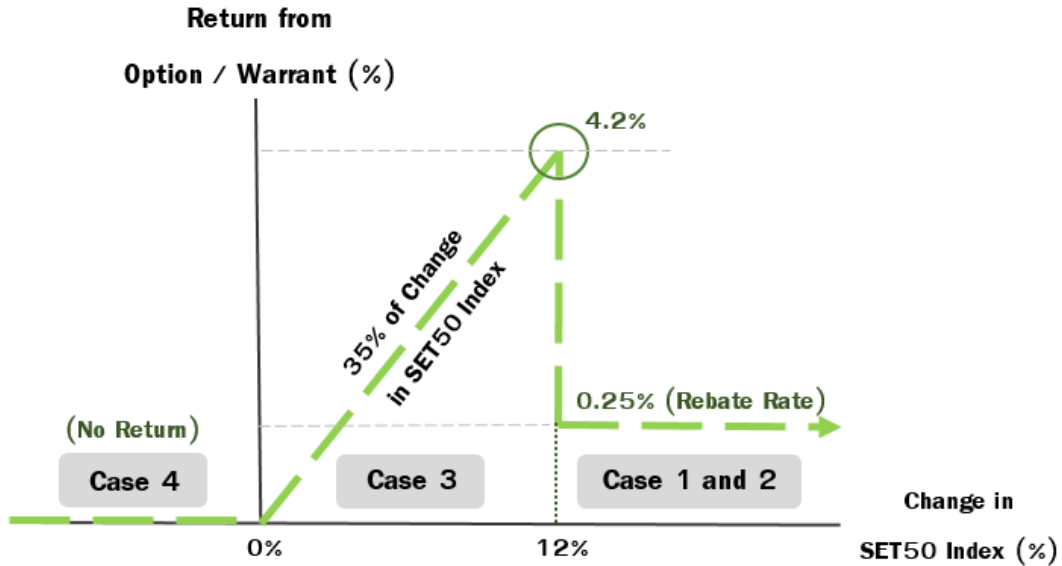
Principal and Return Payout Conditions at maturity

	Conditions	Principal and Return Payout at maturity
Case 1	Change of underlying index on any business day (before valuation date) is more than 12% of underlying index level on issue date	Principal 100% + rebate rate 0.25%
Case 2	Change of underlying index on valuation date is more than 12% of underlying index level on issue date	Principal 100% + rebate rate 0.25%
Case 3	Change of underlying index on valuation date is more than 0% but not more than 12% of underlying index level on issue date	Principal 100% + Option or Warrant Payoff (Option or Warrant Payoff = PR x Change of underlying index x principal)
Case 4	Change of underlying index on valuation date is less than or equal to 0% of underlying index level on issue date	Principal 100%

* Change of underlying index is calculated from the official closing level of the Index for such day.

** The Fund may not receive principal and return as expected if the issuers or banks have payment default.

Return Payout Conditions at maturity diagram



I Fund Account No.
 acknowledged the information appearing in this document as primary information relating to risks. I have studied the investment information of **K Complex Return 1 Year A Fund Not for Retail Investors (KCR1YA-AI)** including the risks and cautions of investment appearing in the prospectus which I have previously and thoroughly acknowledged. I commit to all regulations and conditions appearing in the prospectus.

I am a person who meets the following criterias:

A. Juristic Person with the following characteristics:

- having proportion of shareholders' equity, according to the latest audited financial statement, exceeding Baht 100 million.
- having direct investment in either securities and/or derivatives exceeding Baht 20 million, or securities, derivatives and/or deposits exceeding Baht 40 million, according to the latest audited financial statement.

B. Individual including spouse with the following characteristics:

- having net assets (assets deducted by debts) exceeding Baht 50 million. In this regard, such assets do not include value of immovable property used as permanent residence.
- having annual income exceeding Baht 4 million.
- having direct investment in either securities (shares, debentures, treasury bills, bonds, bills of exchange, unit trusts and warrants to such securities) or derivatives exceeding Baht 10 million, or securities, derivatives and/or deposits exceeding Baht 20 million.

(Unitholder) Date

()

Risk Disclosure of K Complex Return 1 Year A Fund Not for Retail Investors (KCR1YA-AI)

I acknowledge and fully understand the fund's feature, investment policy, investment strategy, conditions and risk factors of K Complex Return 1 Year A Fund Not for Retail Investors (KCR1YA-AI) that;

1. K Complex Return 1 Year A Fund Not for Retail Investors (KCR1YA-AI) is labeled as the high risk or complex fund because it invests in derivative with complex payoff conditions which may differ from plain fund.
2. K Complex Return 1 Year A Fund Not for Retail Investors (KCR1YA-AI) has the following investment policy;
 - 2.1 The Fund mainly invest approximately 99.30% of NAV in local and/or foreign investment grade fixed income and/or deposit with an aim to grow to 100% of initial investment at maturity and The Fund has high sector concentration in Banking sector and high country concentration in Qatar.
 - 2.2 The Fund will invest approximately 0.70% of NAV in option or warrant which payoff depends on SET50 Index level (underlying index level). The notional amount of option or warrant will be approximately 100% of registered fund size.
3. Principal and Return Payout Conditions as the following table;

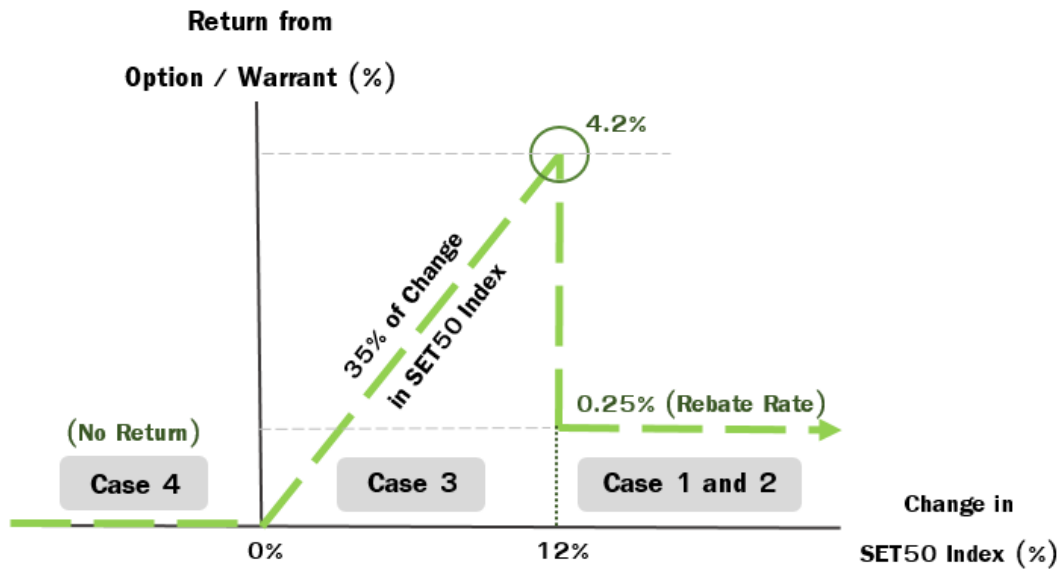
Principal and Return Payout Conditions at maturity

	Conditions	Principal and Return Payout at maturity
Case 1	Change of underlying index on any business day (before valuation date) is more than 12% of underlying index level on issue date	Principal 100% + rebate rate 0.25%
Case 2	Change of underlying index on valuation date is more than 12% of underlying index level on issue date	Principal 100% + rebate rate 0.25%
Case 3	Change of underlying index on valuation date is more than 0% but not more than 12% of underlying index level on issue date	Principal 100% + Option or Warrant Payoff (Option or Warrant Payoff = PR x Change of underlying index x principal)
Case 4	Change of underlying index on valuation date is less than or equal to 0% of underlying index level on issue date	Principal 100%

* Change of underlying index is calculated from the official closing level of the Index for such day.

** The Fund may not receive principal and return as expected if the issuers or banks have payment default.

Return Payout Conditions at maturity diagram



I Fund Account No.
 acknowledged the information appearing in this document as primary information relating to risks. I have studied the investment information of **K Complex Return 1 Year A Fund Not for Retail Investors (KCR1YA-AI)** including the risks and cautions of investment appearing in the prospectus which I have previously and thoroughly acknowledged. I commit to all regulations and conditions appearing in the prospectus.

I am a person who meets the following criterias:

A. Juristic Person with the following characteristics:

- having proportion of shareholders' equity, according to the latest audited financial statement, exceeding Baht 100 million.
- having direct investment in either securities and/or derivatives exceeding Baht 20 million, or securities, derivatives and/or deposits exceeding Baht 40 million, according to the latest audited financial statement.

B. Individual including spouse with the following characteristics:

- having net assets (assets deducted by debts) exceeding Baht 50 million. In this regard, such assets do not include value of immovable property used as permanent residence.
- having annual income exceeding Baht 4 million.
- having direct investment in either securities (shares, debentures, treasury bills, bonds, bills of exchange, unit trusts and warrants to such securities) or derivatives exceeding Baht 10 million, or securities, derivatives and/or deposits exceeding Baht 20 million.

(Unitholder) Date
 ()

For Selling Agent

Request Form

(for Using Proceeds from Auto-Redemption to Subscribe Investment Units of Mutual Fund)

I,.....

am a unitholder of.....("redeemed fund")

Fund Account No.,

wish the management company to use proceeds from auto-redemption of the last period to subscribe investment units of mutual fund ("reinvested fund") as I request. (Please choose only one fund)

K Treasury Fund (K-TREASURY) Fund Account No.....

K Short Term Fixed Income Fund (K-SF) Fund Account No.

I acknowledge that The Management Company will use proceeds from auto-redemption of redeemed fund to subscribe investment units of reinvested fund as I requested above. Numbers of investment units of reinvested fund, which I will receive, are calculated by using subscription price of reinvested fund on auto-redemption day of redeemed fund.

I have studied and understood the information in prospectus of both redeemed fund and reinvested fund, including risk levels of both redeemed fund and reinvested fund.

.....

(Unitholder signature)

Date.....

In case of wishing to make change of your request, please contact Securities Registrar, Securities Services Department, Kasikorn Bank PCL Tel. 0-2470-1976 or 0-2470-1983 Fax. 0-2273-2279

For officer only

Received by Information Examiner

Date Date.....

-This form is for selling agents to attach with Subscription Order Form-